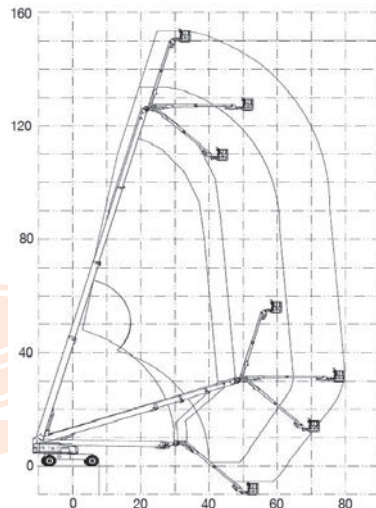




B150JDG - 150' (45.75M)

BOOM LIFT JLG 1500SJ

SPECIFICATION	IMPERIAL	METRIC
Working Height (max. unrestricted)	156ft	47.75m
Platform Height (max. unrestricted)	150ft	45.75m
Working Height (max. restricted)	136ft	41.67m
Platform Height (max. restricted)	130ft	39.67m
Horizontal Reach (max.unrestricted)	960"	24.38m
Horizontal Reach (max. restricted)	779"	19.79m
Platform Size	36" x 96"	0.91m x 2.44m
Machine Height	120"	3.05m
Machine Width (axles retracted)	98"	2.49m
Machine Width (axles extended)	150"	3.82m
Machine Length (stowed)	741"	18.81m
Transport Length (stowed)	516"	13.11m
Ground Clearance (stowed)	12"	300mm
Wheelbase	150"	3.81m
Max. Platform Occupancy	2 PERSONS	
Wind Speed Rating Use	OUTDOOR USE	
Gradeability - stowed	40%	
Total Lift Capacity	507lbs/230kg	992lbs/450kg
Drive	FOUR WHEEL DRIVE	
Maximum Drive Height		
Tyres	RT LUG - FOAM FILLED	
Machine Weight (approx.)	47999lbs	21772kgs
Power Source	DIESEL ENGINE	
Generator 5KVA or 7kva	FITTED MOST MACHINES THIS	
Fuel Tank Capacity	52 gallon	200 litre
Operators Licence	11 M & ABOVE WP LICENCE	



Attachments available, please contact our office.

Machine specifications are approximate & subject to change by the manufacturer without notice.