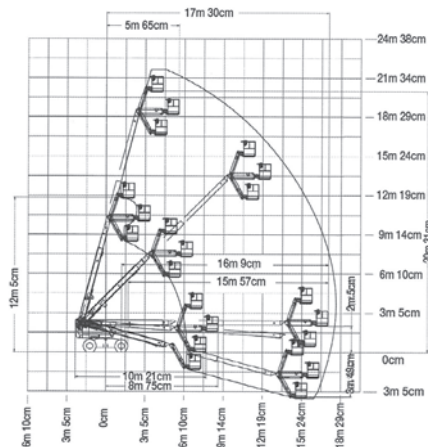




B660JDG - 66' (20.31M)

BOOM LIFT JLG 660SJ

SPECIFICATION	IMPERIAL	METRIC
Working Height maximum	72ft	22.31m
Platform Height maximum	66ft	20.31m
Horizontal Reach maximum	681"	17.30m
Below Ground Reach	118"	3.00m
Platform Size	36" x 96"	0.91m x 2.44m
Machine Height	101"	2.56m
Machine Width	96"	2.42m
Machine Length	402"	10.21m
Transport Length	402"	10.21m
Ground Clearance (stowed)	12"	0.30m
Max. Platform Occupancy	2 PERSONS	
Wind Speed Rating Use	OUT DOOR USE	
Gradeability - stowed	45%	
Total Lift Capacity	507lbs	230kgs
Drive	FOUR WHEEL DRIVE	
Tyres	RT LUG - FOAM FILLED	
Machine Weight (approx.)	29872lbs	13550kgs
Power Source	DIESEL ENGINE	
Generator 5KVA or 7kva	FITTED ALL MACHINES THIS MODEL	
Fuel Tank Capacity	40 gallon	151.4 Litre
Operators Licence	11 METRE & ABOVE WP LICENCE	



Attachments available, please contact our office.

Machine specifications are approximates & subject to change by the manufacturer without notice.