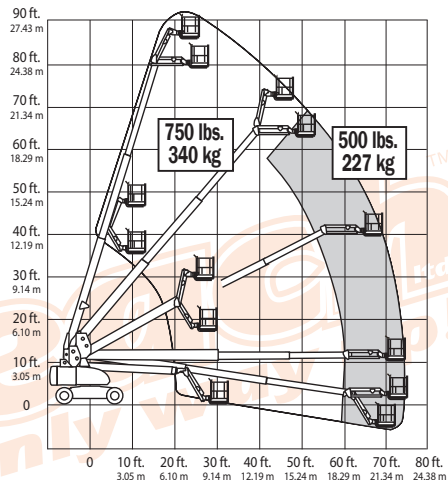




B86JDG - 86' (26.21M)

BOOM LIFT JLG 860SJ

| SPECIFICATION | IMPERIAL | METRIC |
|---------------------------|--------------------------------|---------------|
| Working Height maximum | 92ft | 28.21m |
| Platform Height maximum | 86ft | 26.21m |
| Horizontal Reach maximum | 900" | 22.86m |
| Platform Size | 36" x 96" | 0.91m x 2.44m |
| Machine Height | 120" | 3.05m |
| Machine Width | 98" | 2.49m |
| Machine Length | 480" | 12.19m |
| Ground Clearance (stowed) | 12" | 0.30m |
| Max. Platform Occupancy | 2 PERSONS | |
| Wind Speed Rating Use | OUT DOOR USE | |
| Gradeability - stowed | 45% | |
| Total Lift Capacity | 507lbs | 230kgs |
| Drive | FOUR WHEEL DRIVE | |
| Tyres | RT LUG - FOAM FILLED | |
| Machine Weight (approx.) | 37919lbs | 17200kgs |
| Power Source | DIESEL ENGINE | |
| Generator 5KVA or 7kva | FITTED ALL MACHINES THIS MODEL | |
| Fuel Tank Capacity | 31 gallon | 117.35 litre |
| Operators Licence | 11 METRE & ABOVE WP LICENCE | |



Attachments available, please contact our office.

Machine specifications are approximate & subject to change by the manufacturer without notice.