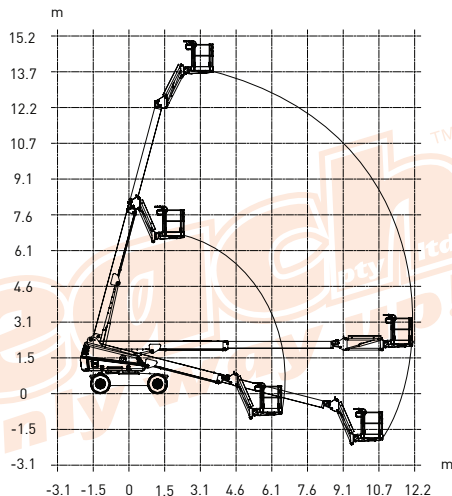




B45SJDG - 45' (13.77M)

BOOM LIFT SKYJACK SJ45T

SPECIFICATION	IMPERIAL	METRIC
Working Height maximum	51ft	15.77m
Platform Height maximum	45ft	13.77m
Horizontal Reach maximum	477"	12.12m
Platform Size	30" x 96"	0.91m x 2.44m
Machine Height	94"	2.39m
Machine Width	90"	2.29m
Machine Length	346"	8.79m
Transport Length		
Ground Clearance (stowed)	11"	0.28m
Max. Platform Occupancy	2 PERSONS	
Wind Speed Rating Use	OUT DOOR USE	
Gradeability - stowed	45%	
Total Lift Capacity	500lbs	227kgs
Drive	FOUR WHEEL DRIVE	
Tyres	RT LUG - FOAM FILLED	
Machine Weight (approx.)	16649lbs	7552kgs
Power Source	DIESEL ENGINE	
Generator 5KVA or 7kva	FITTED MOST MACHINES THIS MODEL	
Fuel Tank Capacity	45 gallons	170 litres
Operators Licence	11 METRE & ABOVE WP LICENCE	



Attachments available, please contact our office.

Machine specifications are approximate & subject to change by the manufacturer without notice.