

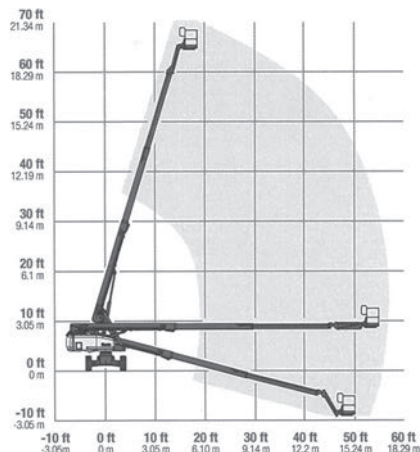


B65 TRAX - 65' (19.80M)

BOOM LIFT GENIE S65 TRAX

SPECIFICATION	IMPERIAL	METRIC
Working Height maximum	71ft	21.86m
Platform Height maximum	65ft	19.86m
Horizontal Reach maximum	673"	17.10m
Platform Size	36" x 72"	0.91m x 2.44m
Machine Height	107"	2.72m
Machine Width	103"	2.61m
Machine Length	374"	9.50m
Transport Length	299"	7.60m
Ground Clearance (stowed)	17"	0.43m
Max. Platform Occupancy	2 PERSONS	
Wind Speed Rating Use	OUT DOOR USE	
Gradeability - stowed	45%	
Total Lift Capacity	500lbs	227kgs
Drive	FOUR WHEEL	
Tyres	4 x TRACKS	
Machine Weight (approx.)	27002lbs	10349kgs
Power Source	DIESEL ENGINE	
Generator 5KVA or 7kva	FITTED MOST MACHINES THIS MODEL	
Fuel Tank Capacity	35 gallon	132 litre
Operators Licence	11 METRE & ABOVE WP LICENCE	

RANGE OF MOTION S™-65



Attachments available, please contact our office.

Machine specifications are approximate & subject to change by the manufacturer without notice.