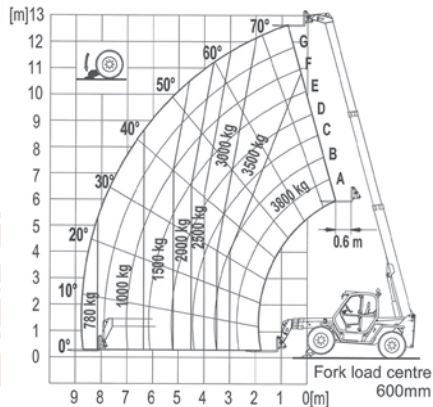


SPECIFICATION	IMPERIAL	METRIC
Lifting Height Maximum	41.34ft	12.60m
Lifting Capacity Maximum	8377lbs	3800kgs
Lift Capacity (At Maximum Height)	6614lbs	3000kgs
Lift Capacity (At Maximum Reach)	1543lbs	700kgs
Forward Reach Max.	346.5"	8.80m
Forward Reach (At Maximum Height)		
Lift Height (At Maximum Capacity)	236"	6.00m
Forward Reach (At Maximum Capacity)	75"	1.90m
Machine Height	96"	2.44m
Machine Width		
Machine Width (With Stabilisers)	87.5"	2.22m
Machine Length [Overall Fork Holder Plates]	206"	5.24m
Machine Length [Overall Forks On]	253.5"	6.44m
Ground Clearance [stowed]	19"	0.48m
Air Conditioning	FITTED ALL UNITS	
Drive	FOUR WHEEL 4x4	
Steer	FRONT WHEEL/CRAB/FOUR WHEEL	
Load Management System	FITTED ALL UNITS	
Power Source	DIESEL ENGINE	
Fuel Tank	40.9 GALLONS	155 LITRES
Machine Weight "DRY" (approx.)	19070lbs	8650kgs
Operators Licence	REFER TO STATE REQUIREMENTS	



T38.13 - 3.8T/13.00M

TELEHANDLER MERLO P38.13



Attachments available, please contact our office.

Machine specifications are approximates & subject to change by the manufacturer without notice.