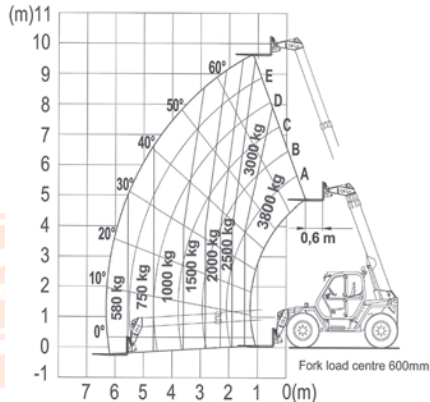


SPECIFICATION	IMPERIAL	METRIC
Lifting Height Maximum	31.82ft	9.70m
Lifting Capacity Maximum	8378lbs	3800kgs
Lift Capacity (At Maximum Height)	6614lbs	3000kgs
Lift Capacity (At Maximum Reach)	1323lbs	600kgs
Forward Reach Max.	244"	6.20m
Forward Reach (At Maximum Height)		
Lift Height (At Maximum Capacity)	315"	8.00m
Forward Reach (At Maximum Capacity)	55"	1.40m
Machine Height	97.5"	2.48m
Machine Width	88"	2.23m
Machine Width (With Stabilisers)		
Machine Length [Overall Fork Holder Plates]	171"	4.34m
Machine Length [Overall Forks On]	218"	5.54m
Ground Clearance [stowed]	22"	0.56m
Air Conditioning	FITTED ALL UNITS	
Drive	FOUR WHEEL 4x4	
Steer	FRONT WHEEL/CRAB/FOUR WHEEL	
Load Management System	FITTED ALL UNITS	
Power Source	DIESEL ENGINE	
Fuel Tank	40.9 GALLONS	155 LITRES
Machine Weight "DRY" (approx.)	17636lbs	8000kgs
Operators Licence	REFER TO STATE REQUIREMENTS	



# T38.10 - 3.8T/10.00M

## TELEHANDLER MERLO P38.10



**Attachments available, please contact our office.**

*Machine specifications are approximates & subject to change by the manufacturer without notice.*