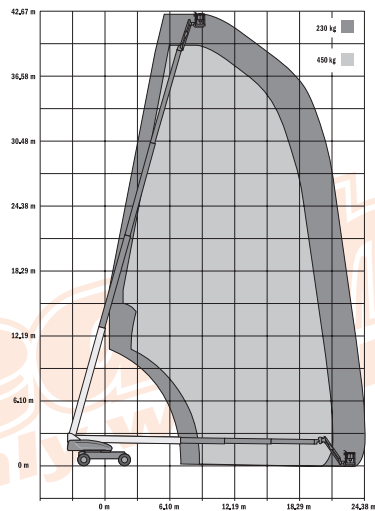




# B135JDG - 135' (41.15M)

## BOOM LIFT JLG 1350SJP

SPECIFICATION	IMPERIAL	METRIC
Working Height maximum	141ft	43.15m
Platform Height maximum	135ft	41.15m
Horizontal Reach maximum	960"	24.38m
Platform Size	36" x 96"	0.91m x 2.44m
Machine Height	120"	3.05m
Machine Width (axles retracted)	98"	2.49m
Machine Width (axles extended)	150"	3.82m
Machine Length (stowed)	467"	11.86m
Transport Length (stowed)	467"	11.86m
Ground Clearance (stowed)	12"	300mm
Max. Platform Occupancy	2 PERSONS	
Wind Speed Rating Use	OUT DOOR USE	
Gradeability - stowed	45%	
Total Lift Capacity	507lbs/230kg	992lbs/450kg
Drive	FOUR WHEEL DRIVE	
Maximum Drive Height	FULL HEIGHT - CREEP MODE	
Tyres	RT LUG - FOAM FILLED	
Machine Weight (approx.)	44974lbs	20400kgs
Power Source	DIESEL ENGINE	
Generator 5KVA or 7kva	FITTED ALL MACHINES THIS MODEL	
Fuel Tank Capacity	31 gallon	117.35 litre
Operators Licence	11 METRE & ABOVE WP LICENCE	



**Attachments available, please contact our office.**

*Machine specifications are approximate & subject to change by the manufacturer without notice.*