

# SJ85 AJ

## ARTICULATING BOOM



### STANDARD FEATURES

- Axle based 4WD system
- Operator controlled locking rear differential and limited slip front differential
- Oscillating axle
- Drivable at full height
- EasyDrive™ direction sensing drive and steer controls
- SpeedyReach™ functionality
- SkyRiser™ functionality
- 360° Continuous turret rotation
- 45% Gradeability
- 65 HP Deutz diesel engine
- Swing out engine tray
- Swing up cowlings
- Modular platform railing system
- Tri-entry sliding mid-rails
- Wiring for AC outlet to platform
- Proportional controls
- Relay based control system
- Colour coded and numbered wiring
- Hourmeter
- Operator horn
- Overload sensing system
- 7.5 kW Generator (includes hydraulic oil cooler)
- Flashing light
- All motion alarm
- Tie down/lifting lugs
- Wet disc SAHR brakes (front and rear axle)
- 18 x 625 Grip lug foam-filled non-marking tyres
- Secondary guarding electrical (SGE)

### ACCESSORIES AND OPTIONS

- 0.91 x 1.83 m Platform
- Half-height mesh platform (either size)
- Diesel scrubber
- Positive air shut-off valve
- Control box cover
- Pipe rack
- Tool caddy
- Rear gate
- Bio oil
- Auxiliary top rail (0.91 x 2.44 m platform only)
- 1/2" Airline to platform
- Hostile environment package  
(Includes cylinder bellows, boom wipers, covers for the fly boom cutouts, and control box cover)

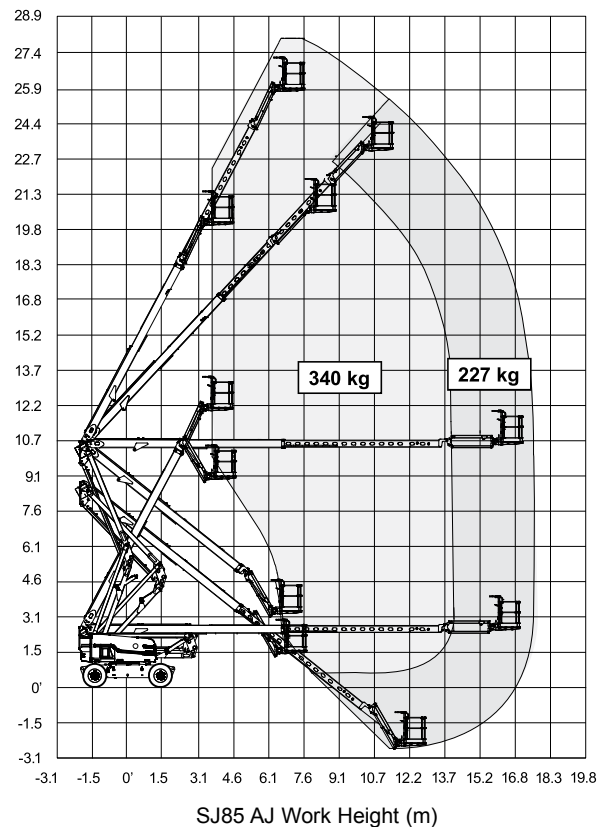
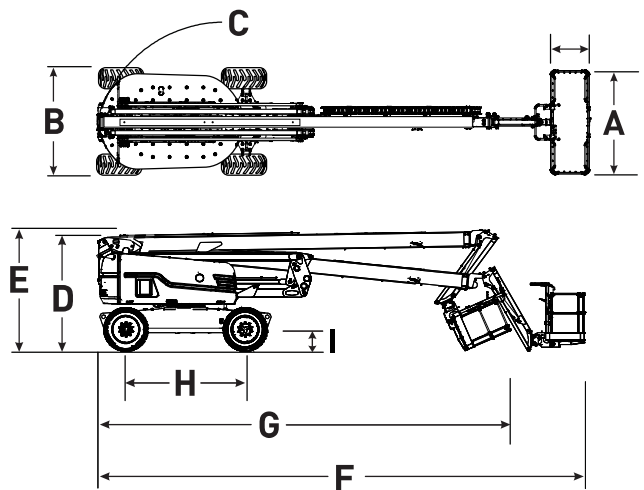
† Standard lead times may be increased when optional equipment is added, consult factory.

‡ Capacities, and machine weights may differ when options are added.

Preliminary specifications at time of printing. Standard lead times may be increased when optional equipment is added, consult factory.

## SJ85 AJ ARTICULATING BOOM

Dimensions	SJ85 AJ
Work Height	27.91 m
Platform Height	25.91 m
Horizontal Reach	17.07 m
Up and Over Height	10.36 m
<b>A</b> Platform Size	0.91 x 2.4 m
<b>B</b> Stowed Width	2.49 m
<b>C</b> Tailswing	0.86 m
<b>D</b> Stowed Height	2.67 m
<b>E</b> Transportation Height	2.90 m
<b>F</b> Stowed Length	11.63 m
<b>G</b> Transportation Length	10.03 m
<b>H</b> Wheelbase	2.84 m
<b>I</b> Ground Clearance	0.33 m
Specifications	SJ85 AJ
Rotation	360° Continuous
Platform Rotation	170°
Jib Length	1.68 m
Jib Range +/-	+65° / -60°
Weight	16,465 kg
Gradeability	45%
Turning Radius (Inside)	3.05 m
Turning Radius (Outside)	6.22 m
Axle Oscillation	10.16 cm
Drive Speed (High speed)	4.8 km/h
Capacity	227 / 340 kg
Local Floor Load (With Rated Load)	12.01 kg/sq cm
Overall Floor Load (With Rated Load)	1733 kg/sq m
Maximum # of Persons	2 / 3
Tyre Type	Foam-filled NM
Tyre Size	18-625
Diesel Engine	Deutz D2011L04i - 65 HP (48 KW)
Fuel Tank Capacity	115 L
Hydraulic Reservoir	170 L



**Skyjack Australia Pty Ltd**  
Unit 1, 35 Honeycomb Drive  
Eastern Creek  
NSW 2766  
Australia  
Phone +61 (0) 2 9854 0700  
Fax +61 (0) 2 9854 0777  
Email: jcranmer@skyjack.com

[www.skyjack.com](http://www.skyjack.com)

This brochure is for illustrative purpose only and based on the latest information at the time of printing. Skyjack Inc. reserves the right to make changes at any time, without notice, to specifications, standard and optional equipment. Consult the Operating Maintenance and Parts Manuals for proper procedures. AS marked platforms are in conformance to Standard AS/NZS 1418.10:2011.

AU/NZ/10/2017