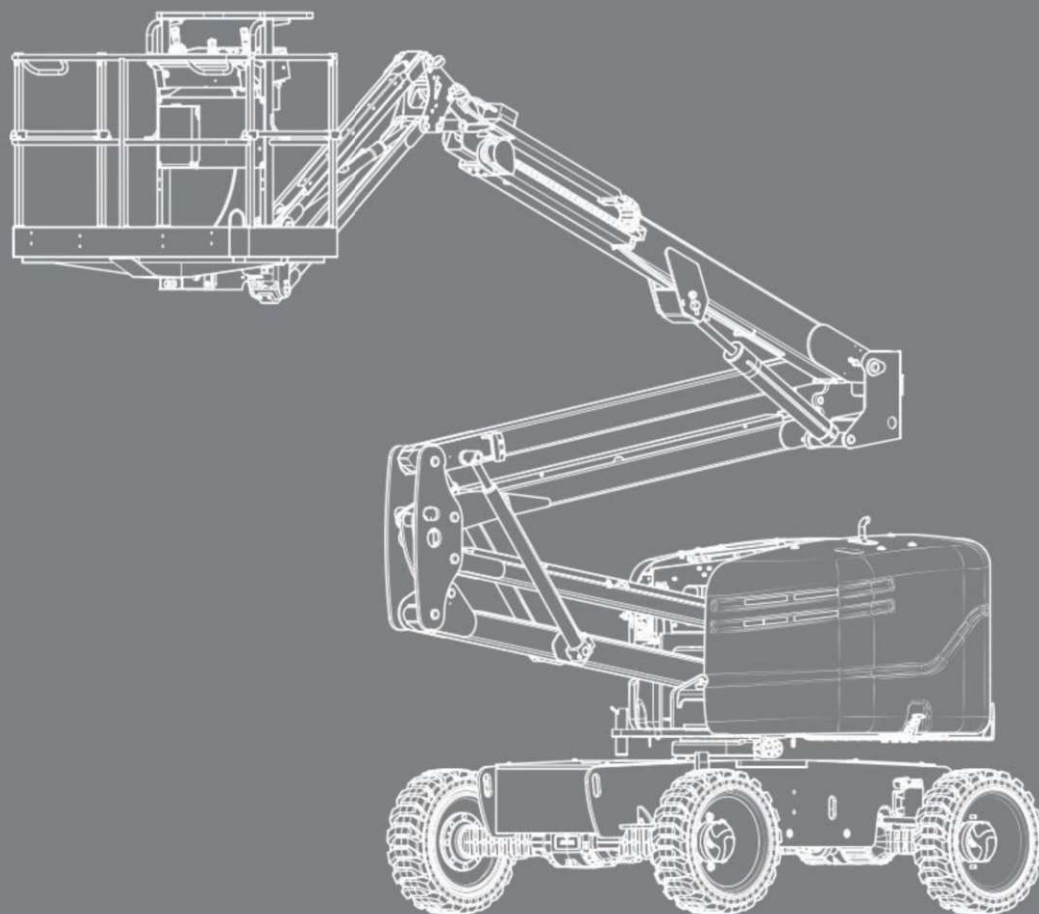




OPERATION MANUAL

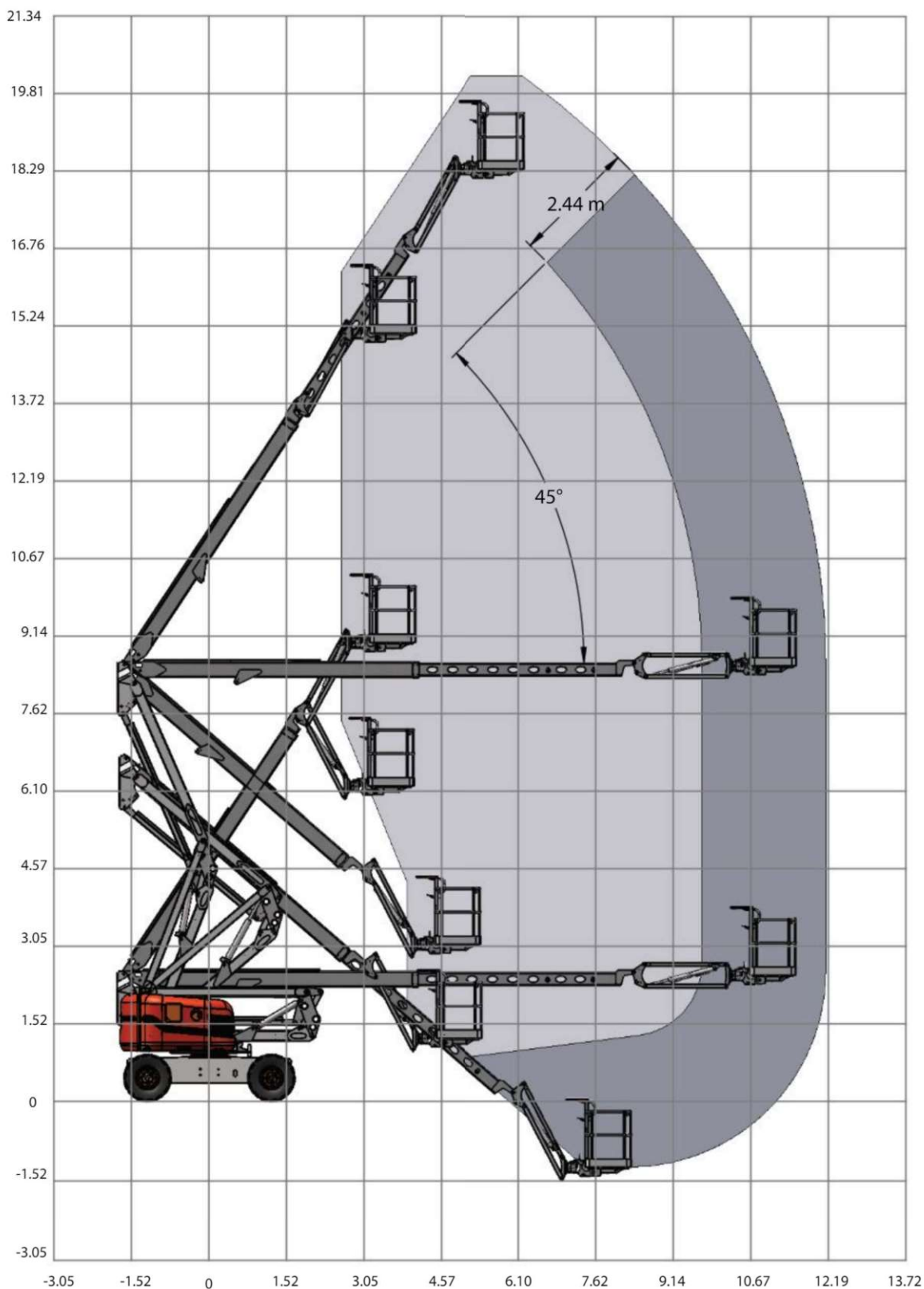
SJ45 AJ+, SJ60 AJ+

ARTICULATING BOOMS

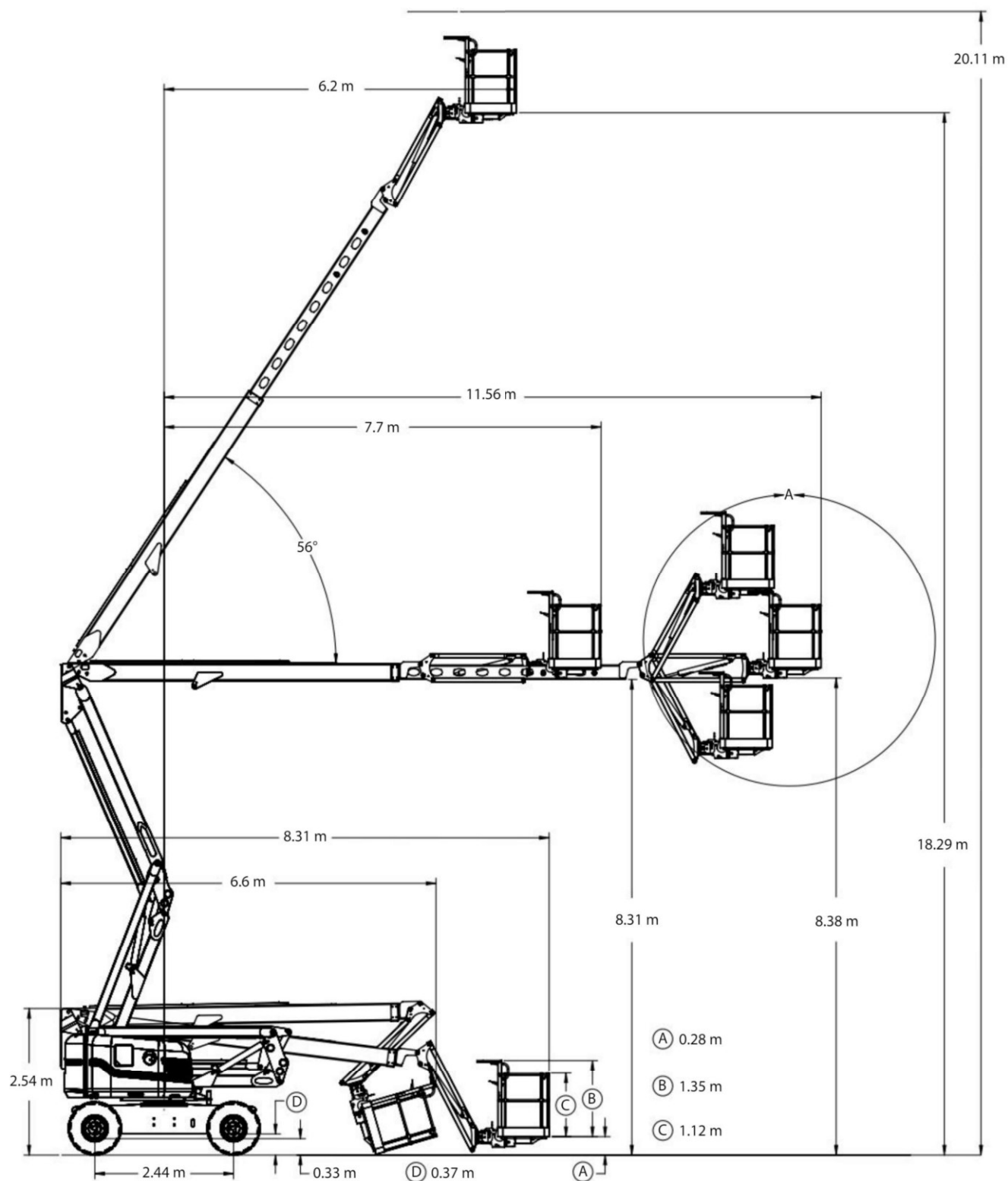


238266AEA
February 2023
AS

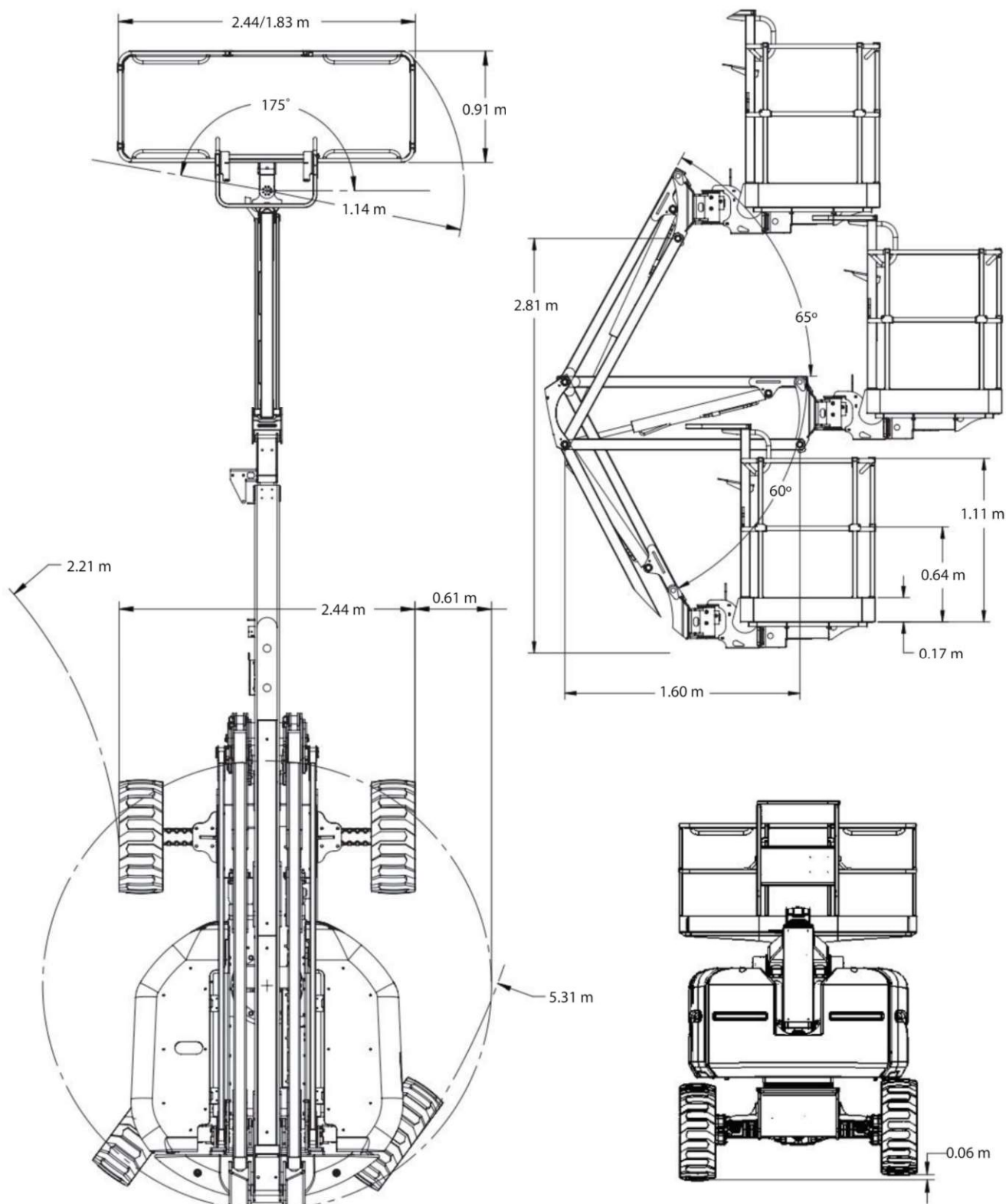
7.1-3 Reach diagram - SJ60 AJ+



7.1-4 Dimensions - SJ60 AJ+



Dimensions - SJ60 AJ+ (continued)



7.4 Specifications - Dimensional Data

		SJ45 AJ+	SJ60 AJ+
Height & Reach	Working Height - maximum	15.54 m	20.11 m
	Platform Height - maximum	13.72 m	18.29 m
	Horizontal Reach - maximum	6.93 m	11.56 m
	Horizontal Reach - at maximum height	2.98 m	6.2 m
	Horizontal Reach - fly boom retracted	5.23 m	7.7 m
	Tailswing	0.61 m	0.61 m
	Up and Over Clearance - at platform	7.53 m	8.38 m
	Up and Over Clearance - at main boom	7.45 m	8.31 m
Platform	Platform Size	0.76 x 1.52 m	0.91 m x 2.44 m
		0.76 x 1.83 m	0.91 m x 1.83 m
	Platform Rotation	175°	175°
	Platform rotation radius	1.14 m	1.14 m
	Platform height - stowed	0.28 m	0.28 m
	Overall railing height	1.35 m	1.35 m
	Platform railing height	1.11 m	1.12 m
Jib	Jib Length	1.42 m	1.60 m
	Jib vertical Range of Motion	2.7 m	2.81 m
	Jib Range of Motion - down	70°	60°
	Jib Range of Motion - up	75°	65°
Dimensional Data	Height - stowed min.	2.06 m	2.54 m
	Stowed length @ min. height	6 m	8.6 m
	Stowed length - min.	4.75 m	6.6 m
	Width	2.29 m	2.44 m
	Wheelbase	2.03 m	2.44 m
	Ground Clearance - chassis	0.39 m	0.37 m
	Ground Clearance - front axle	0.33 m	0.33 m
	Axle Oscillation	0.09 m	0.06 m
	Turning Radius - inside	1.5 m	2.21 m
	Turning Radius - outside	4.34 m	5.31 m
	Turret Rotation	360°	360°

2118AA

7.8 Maximum platform capacities (evenly distributed)

SJ45 AJ+		Regular Platform Capacity		Derated Platform Capacity*	
	Capacity	300 kg	660 lb	272 kg	600 lb
	Maximum number of people	3	3	1	1
	Manual side force	400 N	90 lbf	200 N	45 lbf
Wind rating	-	12.5 m/s (28 mph)		12.5 m/s (28 mph)	
Tilt cutout setting	side-to-side x front-to-back	5 degrees x 5 degrees		5 degrees x 5 degrees	
SJ60 AJ+		Regular Platform Capacity		Derated Platform Capacity*	
High-capacity zone	Capacity	454 kg	1000 lb	454 kg	1000 lb
	Maximum number of people	3	3	1	1
	Manual side force	400 N	90 lbf	200 N	45 lbf
Low-capacity zone	Capacity	300 kg	660 lb	272 kg	600 lb
	Maximum number of people	2	2	1	1
	Manual side force	400 N	90 lbf	200 N	45 lbf
Wind rating	-	12.5 m/s (28 mph)		12.5 m/s (28 mph)	
Tilt cutout setting	side-to-side x front-to-back	5 degrees x 5 degrees		5 degrees x 5 degrees	

*Refer to [Section 3](#) for the capacity derate switch operation.

2121AA

7.9 Floor loading pressure

Model		Weights		Pressures	
		Gross MEWP Weight	Weight per Wheel**	LCP***	OFL***
SJ45 AJ+	min*	5075 kg	1450 kg	766 kPa	7.6 kPa
	max*	5375 kg	2725 kg	1026 kPa	8 kPa
SJ60 AJ+	min*	8530 kg	2177 kg	788 kPa	11.2 kPa
	max*	8980 kg	4082 kg	1087 kPa	11.8 kPa

*Min: Minimum MEWP weight (Unloaded platform, no options/attachments)

Max: Maximum MEWP weight (Platform loaded to capacity with options/attachments)

**Wheel Load is the weight that can be experienced on one wheel.

Note: This is more than 25% of the machine weight due to possible weight distribution over the machine and platform.

***LCP: Local Concentrated Pressure is a measure of how hard the MEWP presses on the area in direct contact with the floor/tire.

OFL: Overall Floor Load (Pressure) is a measure of the average load the MEWP imparts on the whole surface directly underneath the chassis. This has been calculated by dividing the MEWP weight by the overall floor area occupied by the MEWP (on wheels).

Note: The floor covering (e.g., tile, carpet, etc.) or the structure (e.g., beams) of the operating surface must be able to withstand more than the values indicated above.

Note: The LCP or OFL that an individual surface can withstand varies from structure to structure and is generally determined by the engineer or architect for that particular structure.